

FlexRx™ Light Adherence Packaging

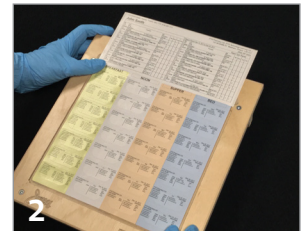
MAKING MEDICATION CHANGES



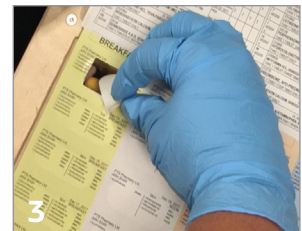
Identify the cells that require medication changes (1).



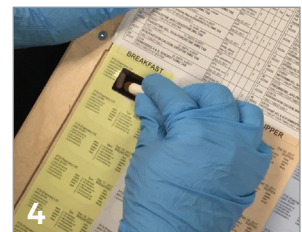
Stabilize the card by placing it blister-side-down into the sealing tray (2).



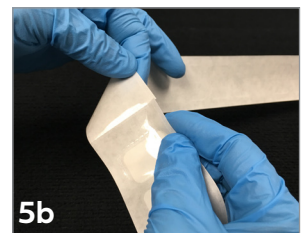
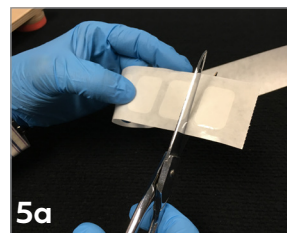
Push through the appropriate label with your finger, pinch the label and peel the label backward to access the medication (3).



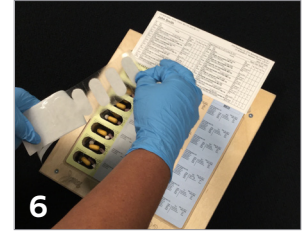
Modify the medications within the cells as required (4).



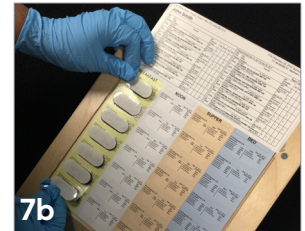
Use scissors to cut off the necessary number of repair tape units for individual cells (5a). If the same time pass must be changed for all seven days of the week (i.e., an entire column under Breakfast, Lunch, Supper or Bedtime), detach the repair tape at the perforation point, which is located after every seven units in the roll (5b).



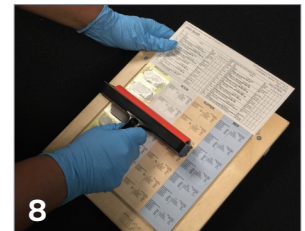
Remove the tape backing (6).



Position the tape over the modified cell (7a) or column of cells (7b) and gently press around the perimeter of the cell(s) with your finger to engage adhesive.



Use a roller to ensure the repair tape is adequately sealed (8).



The FlexRx™ Light packaging is now ready to dispense (9).

